



IPOINT INTEGRATION GUIDE

Overview:

iPort manufactures iPod mounts and IP keypads containing a number of buttons that are used to control an automation system's functions directly over the network.

Supported Models:

- IPORTSM10B
- IPORTSM6B

Supported Two-Way Commands:

The module is only used for macro integration:

- Prefixed Color (blue, green, cyan, red, etc.)
- Custom Color (hex color code)

Supported Macro Events (Automation):

- Pressed Button: Triggers when "button is pressed".

Module Requirements:

The following must be met to run the module successfully:

- iPort device must be set to **Static IP address**.
- iPort device must be properly **configured through its web portal**:

http://<IP Address>/iport_conf.htm



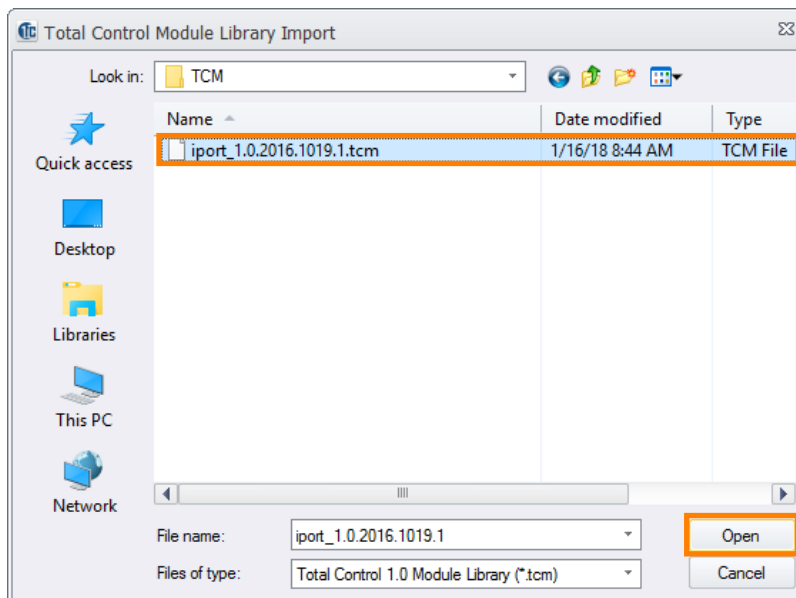
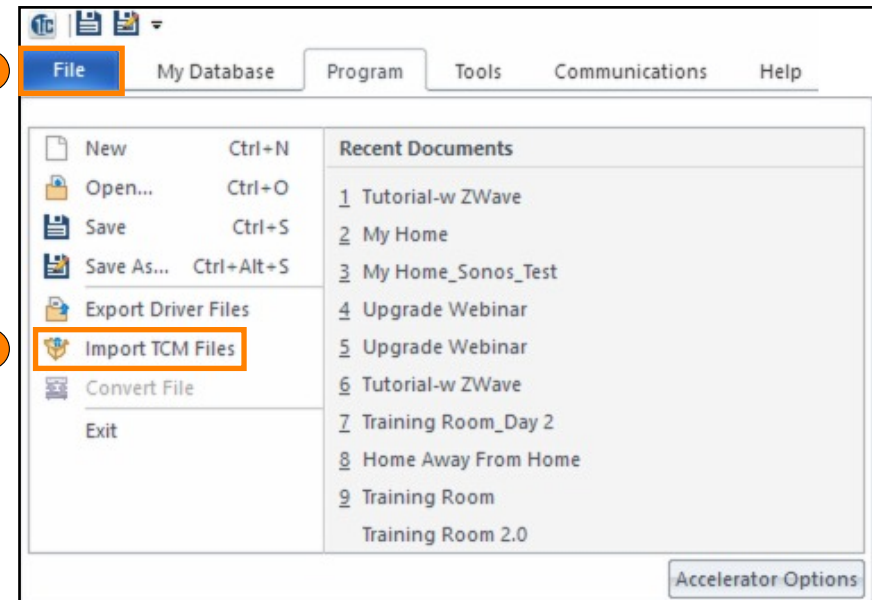
TOTAL CONTROL 2.0

IPOINT INTEGRATION

Importing the TCM Module:

Be sure to download the module from the [URC Control Room](#) or the [URC Dealer Portal](#). Assure this file is in an easy to find location. Generally after downloading this file, it is found in the "Downloads" folder.

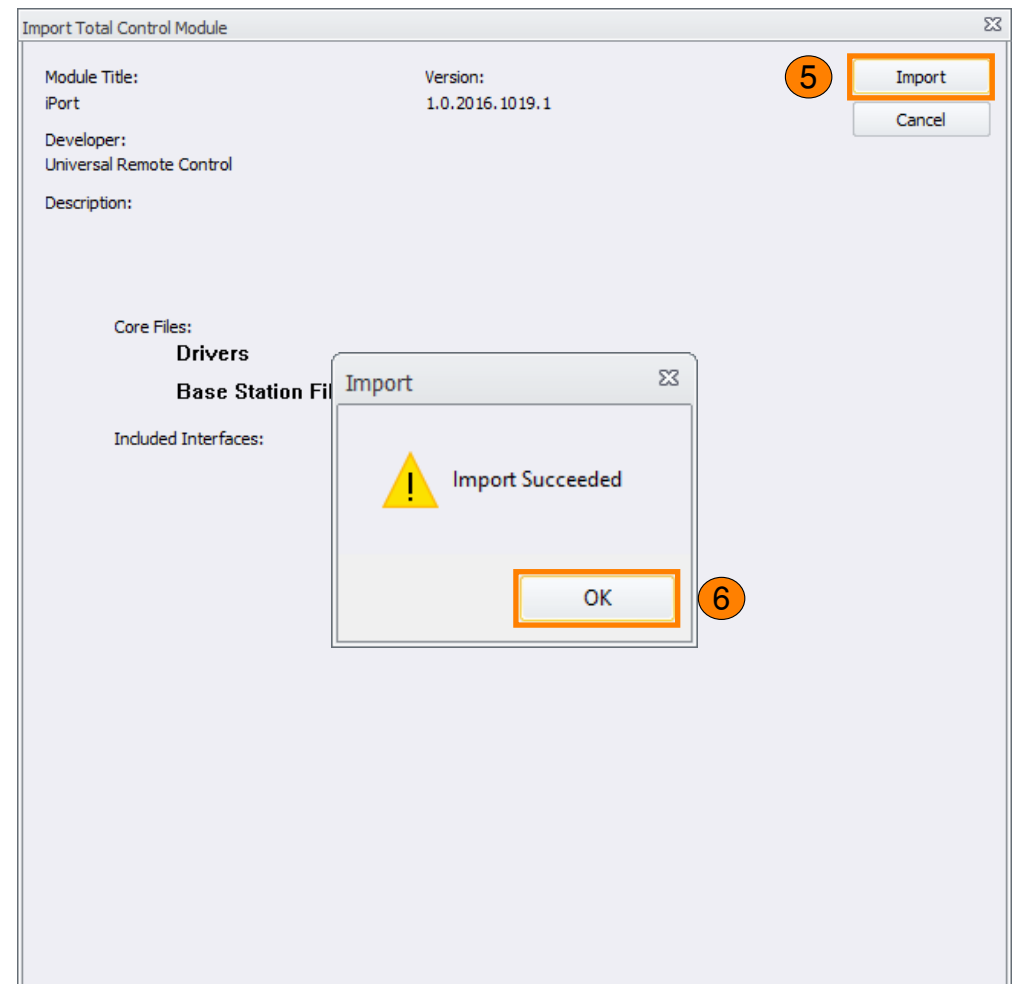
1. Select **File**.
2. Select **Import TCM Files**.



3. Locate and select the **TCM file**.
4. Select **Open**.

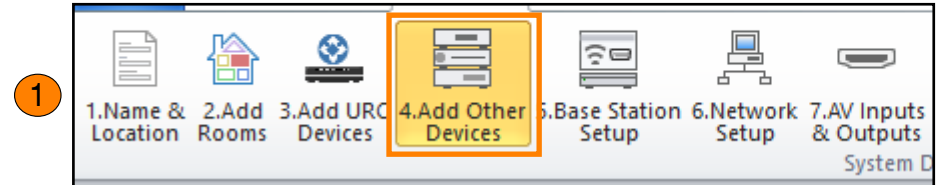
5. Select **Import**.
6. Select **OK**.
7. **Restart** the **Accelerator 2.0** software.

Once the software is reopened, the module is located within **Step 4. Add Other Devices** under the "My" Database.



Adding the Module:

This document adds the module to an existing Accelerator 2.0 file; however, the steps mentioned below are applicable to new systems.

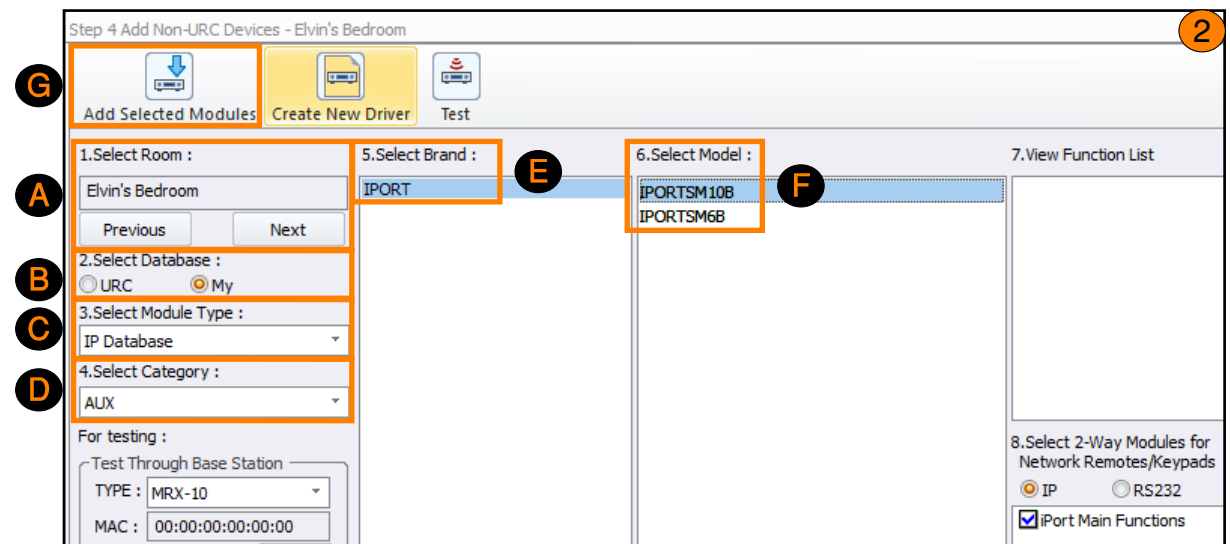


1. Select **Step 4. Add Other Devices**.

2. Perform the following:

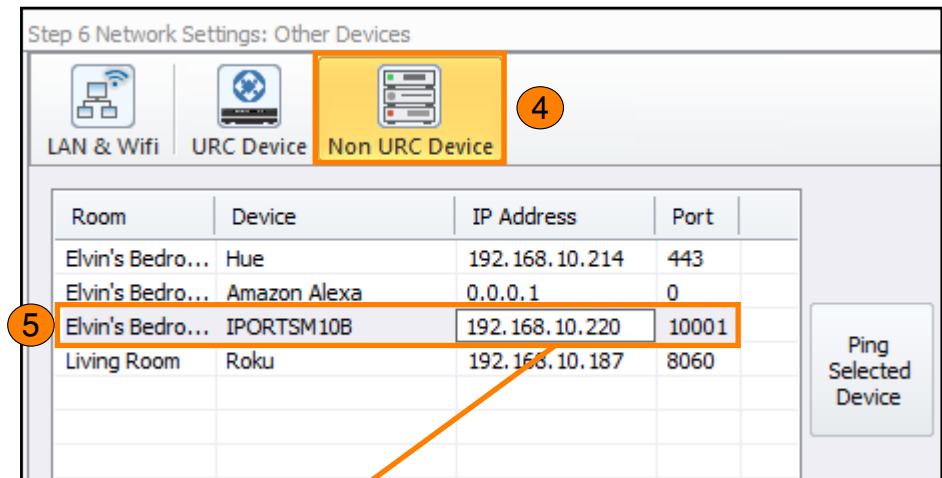
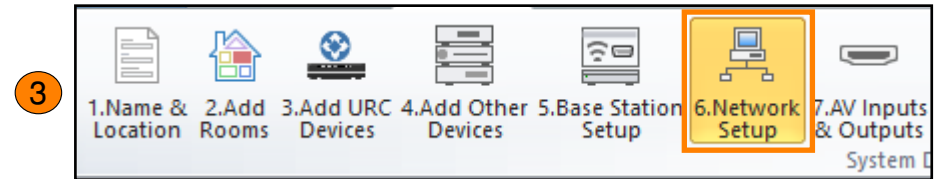
- a. **Select Room:** Add the device to a room
- b. **Select Database:** My
- c. **Select Module Type:** IP Database
- d. **Select Category:** AUX
- e. **Select Brand:** IPORT
- f. **Select Model:** IPORTSM10B or IPORTSM6B
- g. Select **Add Selected Modules**

This adds the iPort module to the **Project Tree**.



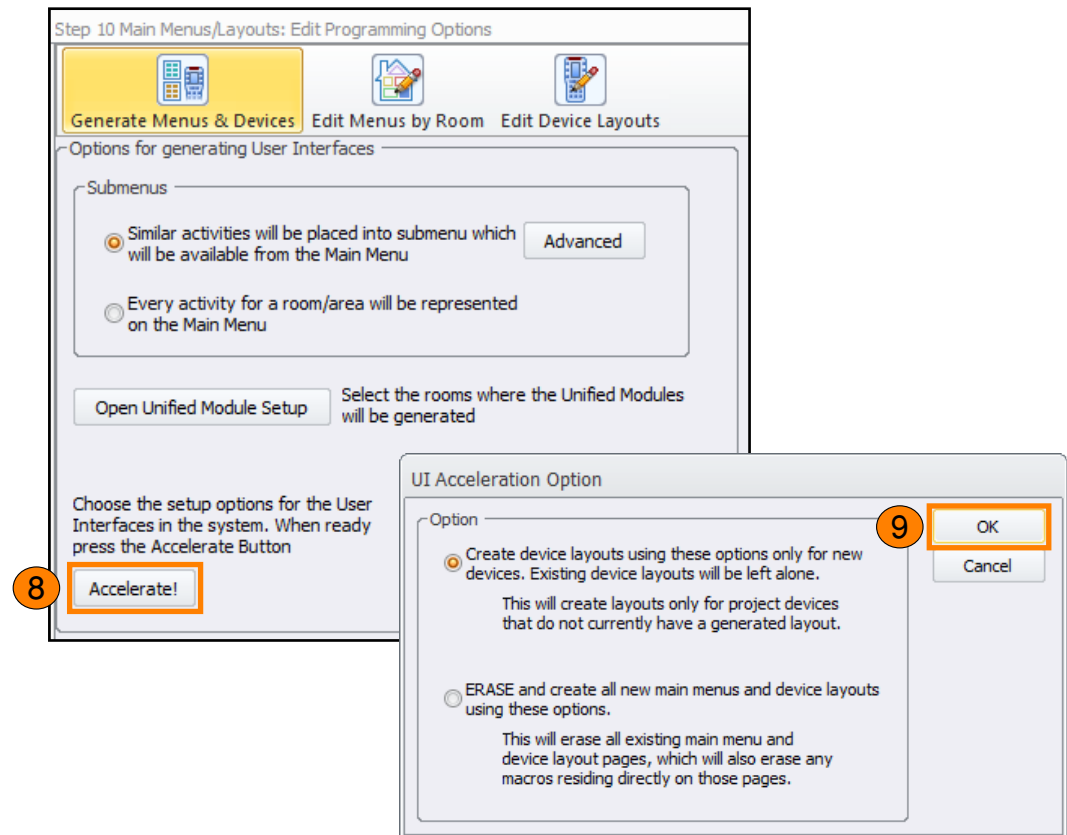
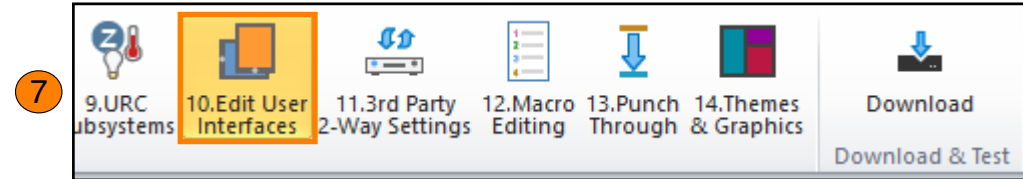
3. Select **Step 6. Network Setup**.
4. Select **Non URC Device**.
5. **Double-click** on the IP Address section of the iPort device.
6. **Enter the IP address** for the iPort device.

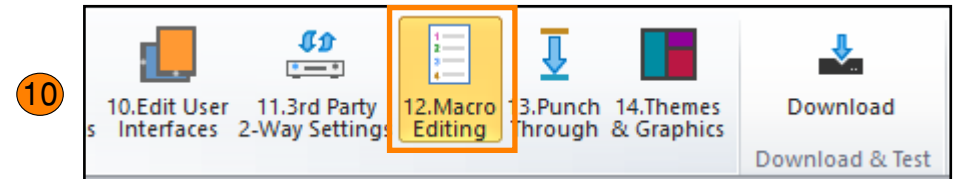
Remember, this device **MUST** be set to a **Static IP address**. Never change the **Port** number, this is derived from the manufacture.



6 192.168.10.220

7. Select **Step 10. Edit User Interfaces**.
8. Select **Accelerate**.
9. Select **OK**.

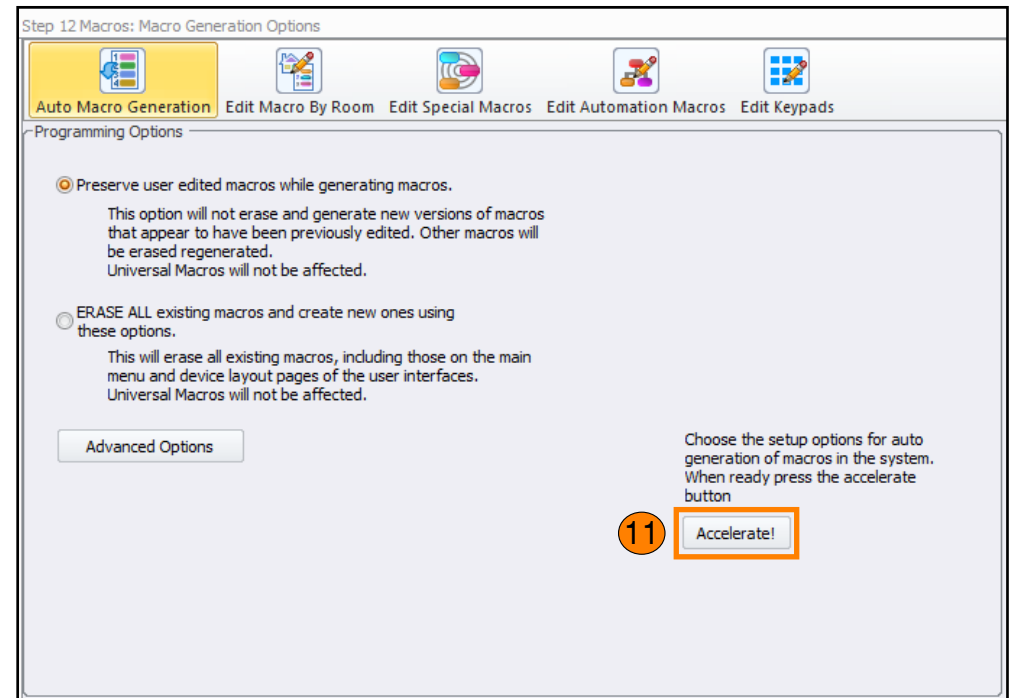




10. Select **Step 12. Macro Editing**.

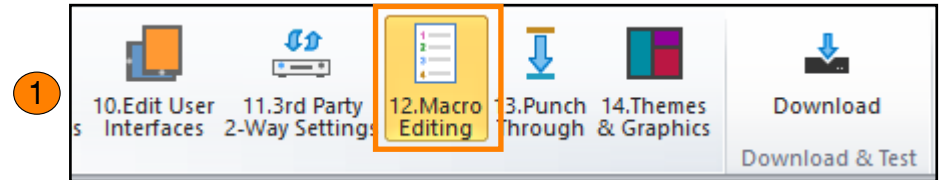
11. Select **Accelerate**.

This completes the implementation process of adding the module to an existing Accelerator 2.0 system.



Programming Device Events:

Through Device Events, this module is able to assign macros to specific keypad presses. This section of the documents follows the step-by-step procedures of assigning a macro to a keypad button:

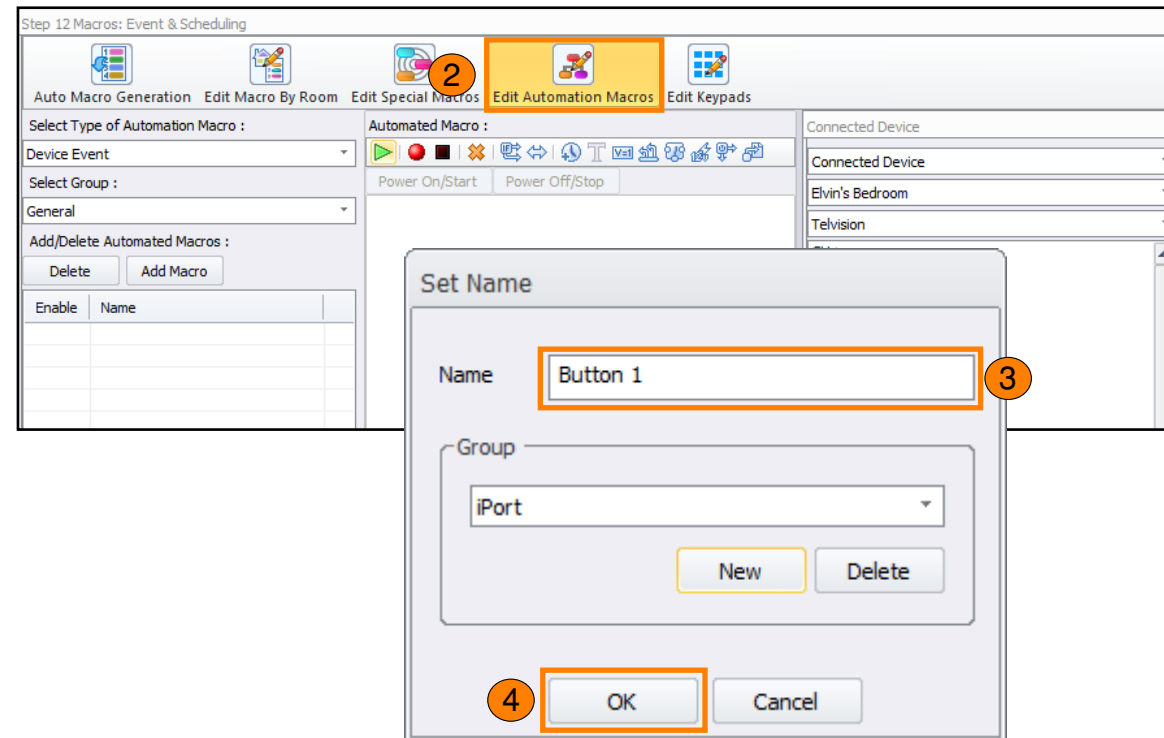


1. Select **Step 12. Macro Editing**.
2. Select **Add Macro**.
3. Enter a **name**, this is only viewed by the system programmer.

Accelerator 2.0 supports Device Event Groups. A Group contains the macros added by the system programmer.

The example at the left adds the Device Event Macro to the iPort Group. To add a new group, select New and enter a name.

4. Select **OK**.

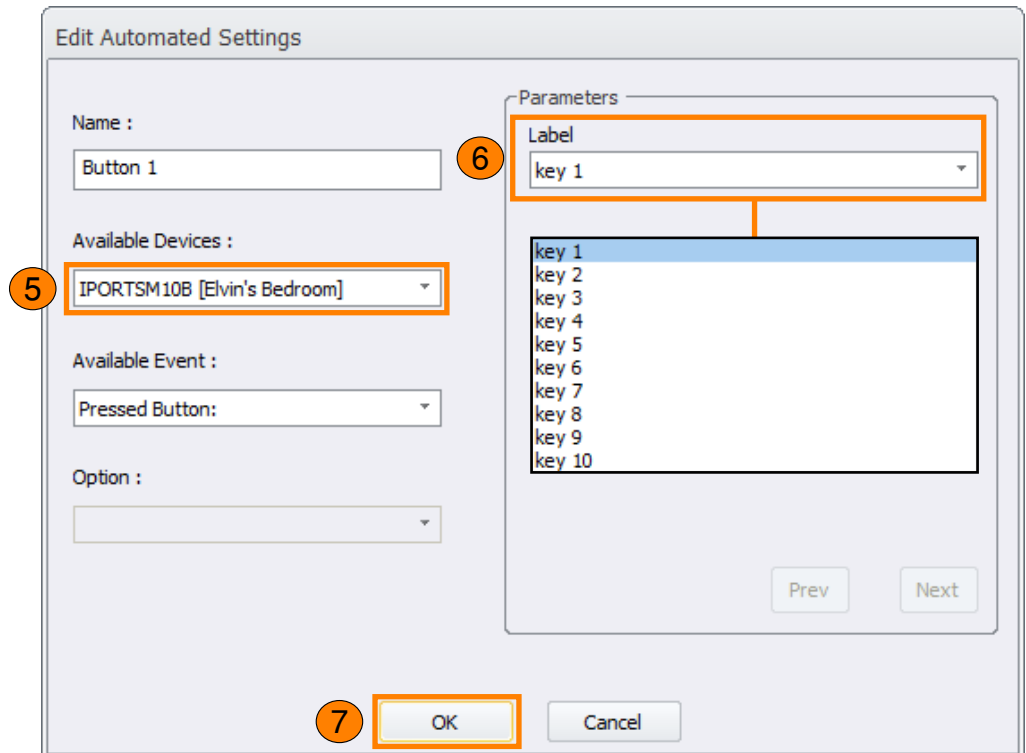


5. Select the **iPort device**.

6. Use the drop-down menu to select which key to assign.

The module supports up to ten (10) keys. Each key can be assigned it's own unique macro. These macros only trigger when that key is pressed.

7. Select **OK**.



8. Program the **macro**.

The example at the right uses a Universal Macro that turns on all the lights in the system.

Use the Connected Device drop-down menu to add Connected Device commands, ZW Device commands, Room Power, Universal Macros, and more.

Remember, this macro is only triggered when the button the iPort device has been selected.

